

# Fast Grass 40

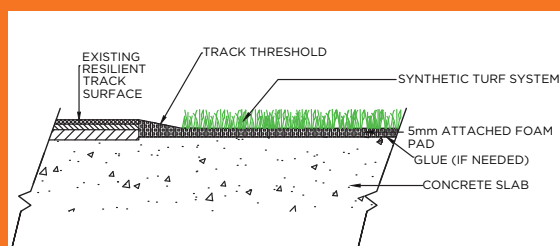
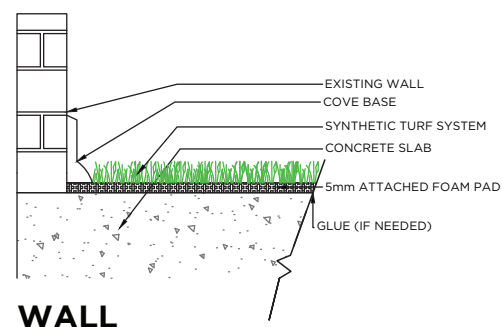


## PROPERTY

## DESCRIPTION

AT740

<b>Primary/Stalk Yarn Polymer</b>	52% Polyethylene
<b>Secondary/Thatch Yarn Polymer</b>	48% Nylon
<b>Yarn Cross Section</b>	Polyethylene Slit-Film/Texturized Nylon
<b>Standard Colors</b>	Field Green; White
<b>UV Stabilized</b>	Yes
<b>Fabric Construction</b>	Tufted
<b>Primary Backing</b>	Dual layered woven polypropylene
<b>Coating Type(s)</b>	SilverBack™ Polyurethane or 5mm Polyurethane Foam w/fleece
<b>Perforations</b>	Custom Only
<b>Polyethylene (Slit-Film) Yarn Denier/Ends</b>	5040/1
<b>Texturized Nylon Denier/Ends(Thatch)</b>	4400/8
<b>Infill</b>	Preferred Infill
<b>Pile Height</b>	3/4"
<b>Pile Weight</b>	40 oz.



Standard Line and Field Colors\*



## APPLICATION

This non-rubber infilled turf has all the advantages of previous generations and perform even higher in wear and resistance tests. The blend of nylon and polyethylene is an almost perfect 50/50 combination. This gives you the true ball roll of a traditional nylon field, with the softness of the new generation rubber-filled turf. No rubber infill makes maintenance easier, and up to 10% cooler. These systems can also be portable with added 4" or 8" velcro.



\*Custom colors available upon request



## TESTING

## FAST GRASS 40

### FINISHED FABRIC

### ENGLISH SYSTEM

### METRIC SYSTEM

### ASTM TEST

<i>Nominal Specification</i>	<i>Value</i>	<i>Units</i>	<i>Value</i>	<i>Units</i>	<i>Method</i>
<b>Pile Height (Nominal)</b>	.75	In.	1905	mm.	D-5823
<b>Face Weight</b>	40	oz/yd <sup>2</sup>	1356	g/m <sup>2</sup>	D-5828
<b>Total Fabric Weight (8mm Foam)</b>	160	oz/yd <sup>2</sup>	5425	g/m <sup>2</sup>	D-5828
<b>Total Fabric Weight (SilverBack™)</b>	67	oz/yd <sup>2</sup>	2271	g/m <sup>2</sup>	D-5828
<b>Primary backing Weight</b>	7.4	oz/yd <sup>2</sup>	251	g/m <sup>2</sup>	D-5828
<b>Secondary Coating Weight (Foam)</b>	113	oz/yd <sup>2</sup>	3831	g/m <sup>2</sup>	D-5828
<b>Secondary Coating Weight (SilverBack™)</b>	20	oz/yd <sup>2</sup>	678	g/m <sup>2</sup>	D-5828
<b>Tuft Bind</b>	>8	lbs.	>3.6	Kg.	D-1335
<b>Grab Tear Strength (Average)</b>	>200	lbs.	>91	Kg.	D-2256
<b>Lead Content</b>	<50	ppm	<50	ppm	D-2766
<b>Total Yarn Linear Density</b>	9,400	Denier	10,445	D-Tex	D-1577
<b>Tensile Strength</b>	8.0	lbs.	3.63	Kg.	D-5034
<b>Stitch Rate</b>	13	Per 3"	17	Per 10 cm	D-5793
<b>Machine Gauge</b>	1/4	In.	0.95	Cm.	D-5793
<b>Flammability</b>	TEST	PASSED	TEST	PASSED	D-2859
<b>Water Permeability w/infill</b>	>30	In./Hr.	>76	Cm./Hr.	F-1551
<b>Fiber Thickness</b>	9.4	mils	100	microns	D-3218
<b>Fabric Width</b>	12.00	Ft.	3.60	M	None