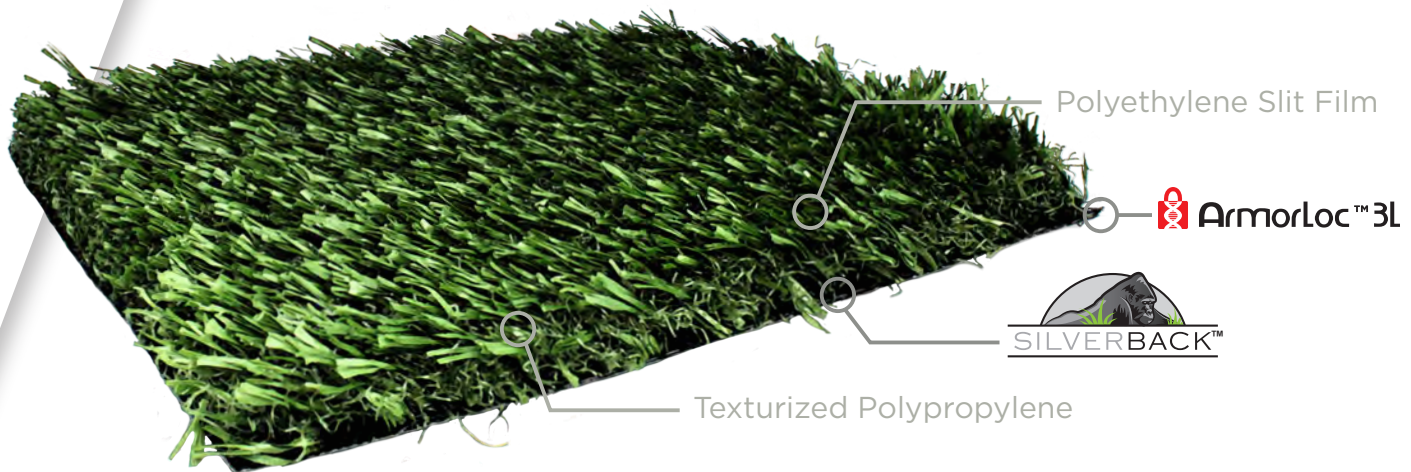


Fielder's Choice 50

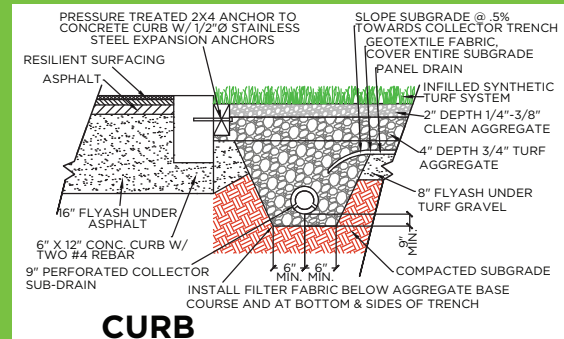


SPORTTURF™

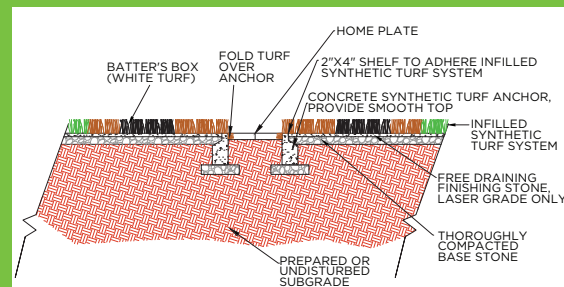


PROPERTY	DESCRIPTION
Primary Yarn Polymer	Polyethylene; Polypropylene
Yarn Cross Section	Polyethylene Slit Film; Texturized Polypropylene
Standard Color	Field; Terra Cotta
Additional Colors Available	White
UV Stabilized	Yes
Fabric Construction	Tufted
Primary Backing	Dual layered woven polypropylene
Coating Type	SilverBack™ Polyurethane
Perforations	Yes
Polyethylene Yarn Denier/Ends	8000/1 (Slit) 4600/8 (Texturized PP)
Recommended Infill	1 lb. Silica Sand; 2.75 lbs. SBR Rubber
Pile Height	1 3/4"
Pile Weight	50 oz.

FL416-50

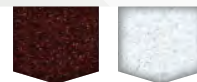


CURB



EQUIPMENT

Standard Line and Field Colors*



APPLICATION

This is a field product. This product should be installed outdoors on a compacted aggregate base. Custom designed for baseball, Fielder's Choice has the added durability designed to reduce infill splash and migration which is extremely important in gameplay.



*Custom colors available upon request

TESTING

FIELDER'S CHOICE 50

FINISHED FABRIC

ENGLISH SYSTEM

METRIC SYSTEM

ASTM TEST

<i>Nominal Specification</i>	<i>Value</i>	<i>Units</i>	<i>Value</i>	<i>Units</i>	<i>Method</i>
Pile Height (Nominal)	1 3/4	In.	44.45	mm.	D-5823
Face Weight	50	oz/yd ²	1695	g/m ²	D-5848
Total Fabric Weight	77	oz/yd ²	2611	g/m ²	D-5848
Primary backing Weight	7.4	oz/yd ²	251	g/m ²	D-5848
Secondary Coating Weight	22	oz/yd ²	746	g/m ²	D-5848
Tuft Bind	>10	lbs.	>4.5	Kg.	D-1335
Grab Tear Strength (Average)	>200	lbs.	>91	Kg.	D-2256
Lead Content	<50	ppm	<50	ppm	D-2765
Total Yarn Linear Density	12,600	Denier	14,000	D-Tex	D-1577
Tensile Strength (Slit PE)	8	lbs.	3.63	Kg.	D-5034
Tensile Strength (Texturized PP)	3.7	lbs.	1.7	Kg.	D-789
Stitch Rate	11.5	Per 3"	15.07	Per 10 cm	D-5793
Machine Gauge	1/2	In.	1.27	Cm.	D-5793
Flammability	TEST	PASSED	TEST	PASSED	D-2859
Water Permeability w/infill	>30	In./Hr.	>30	Cm./Hr.	F-1551
Fiber Thickness (Slit PE)	9.4	mils	100	microns	D-3218
Fabric Width	15	Ft.	4.6	M	None

08/25/2023