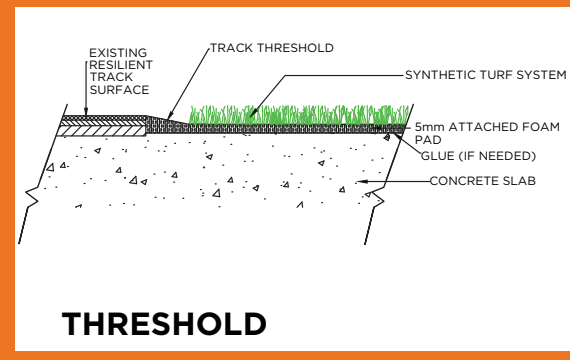
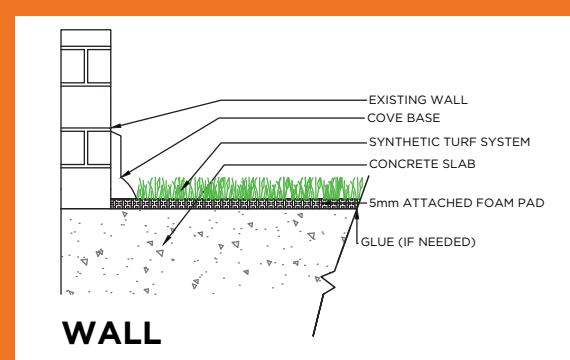


# Fast Grass 55



PROPERTY	DESCRIPTION
Primary/Stalk Yarn Polymer	52% Polyethylene
Secondary/Thatch Yarn Polymer	48% Nylon
Yarn Cross Section	Polyethylene Slit-Film/Texturized Nylon
Standard Colors	Field Green; White
UV Stabilized	Yes
Fabric Construction	Tufted
Primary Backing	Dual layered woven polypropylene
Coating Type(s)	SilverBack™ Polyurethane or 5mm Polyurethane Foam w/fleece
Perforations	Custom Only
Polyethylene (Slit-Film) Yarn Denier/Ends	5040/1
Texturized Nylon Denier/Ends(Thatch)	4400/8
Recommended Infill	N/A
Pile Height	7/8"
Pile Weight	55 oz.

AT755



Standard Line and Field Colors\*



## APPLICATION

This non-rubber infilled turf has all the advantages of previous generations and perform even higher in wear and resistance tests. The blend of nylon and polyethylene is an almost perfect 50/50 combination. This gives you the true ball roll of a traditional nylon field, with the softness of the new generation rubber-filled turf. No rubber infill makes maintenance easier, and up to 10% cooler. These systems can also be portable with added 4" or 8" velcro.



\*Custom colors available upon request



## TESTING

## FAST GRASS 55

### FINISHED FABRIC

### ENGLISH SYSTEM

### METRIC SYSTEM

### ASTM TEST

<i>Nominal Specification</i>	<i>Value</i>	<i>Units</i>	<i>Value</i>	<i>Units</i>	<i>Method</i>
<b>Pile Height (Nominal)</b>	7/8	In.	22.23	mm.	D-5823
<b>Face Weight</b>	55	oz/yd <sup>2</sup>	1865	g/m <sup>2</sup>	D-5828
<b>Total Fabric Weight (5mm Foam)</b>	140	oz/yd <sup>2</sup>	4747	g/m <sup>2</sup>	D-5828
<b>Total Fabric Weight (SilverBack™)</b>	82	oz/yd <sup>2</sup>	2780	g/m <sup>2</sup>	D-5828
<b>Primary backing Weight</b>	7.4	oz/yd <sup>2</sup>	251	g/m <sup>2</sup>	D-5828
<b>Secondary Coating Weight (Foam)</b>	78	oz/yd <sup>2</sup>	2645	g/m <sup>2</sup>	D-5828
<b>Secondary Coating Weight (SilverBack™)</b>	20	oz/yd <sup>2</sup>	678	g/m <sup>2</sup>	D-5828
<b>Tuft Bind</b>	>8	lbs.	>3.6	Kg.	D-1335
<b>Grab Tear Strength (Average)</b>	>200	lbs.	>91	Kg.	D-2256
<b>Lead Content</b>	<50	ppm	<50	ppm	D-2766
<b>Total Yarn Linear Density</b>	9,400	Denier	10,445	D-Tex	D-1577
<b>Tensile Strength</b>	8.0	lbs.	3.63	Kg.	D-5034
<b>Stitch Rate</b>	17	Per 3"	22.27	Per 10 cm	D-5793
<b>Machine Gauge</b>	1/4	In.	0.95	Cm.	D-5793
<b>Flammability</b>	TEST	PASSED	TEST	PASSED	D-2859
<b>Water Permeability w/infill</b>	>30	In./Hr.	>76	Cm./Hr.	F-1551
<b>Fiber Thickness</b>	9.4	mils	100	microns	D-3218
<b>Fabric Width</b>	12.00	Ft.	3.60	M	None

