

Fast Grass 40



Polyethylene Slit-Film

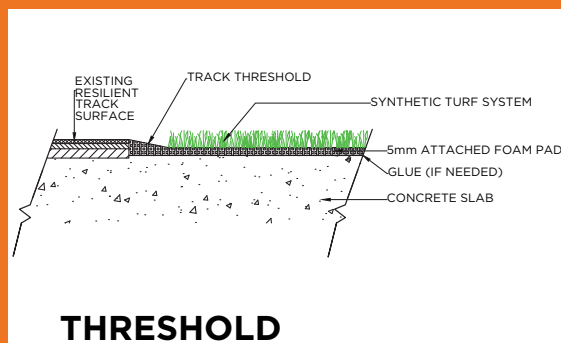
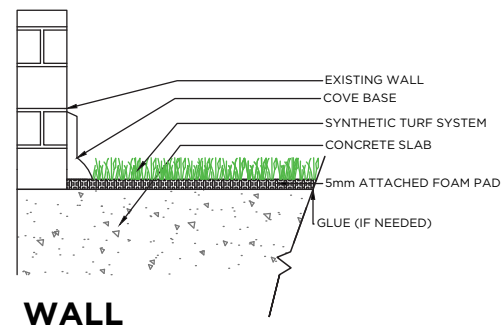
Texturized Nylon

PROPERTY

DESCRIPTION

AT740

Primary/Stalk Yarn Polymer	52% Polyethylene
Secondary/Thatch Yarn Polymer	48% Nylon
Yarn Cross Section	Polyethylene Slit-Film/Texturized Nylon
Standard Colors	Field Green, White, Red, FLA Blue, Yellow, Black
UV Stabilized	Yes
Fabric Construction	Tufted
Primary Backing	Dual layered woven polypropylene
Coating Type(s)	SilverBack™ Polyurethane or 5mm Polyurethane Foam w/fleece
Perforations	Custom only
Polyethylene (Slit-Film) Yarn Denier/Ends	5040/1
Texturized Nylon Denier/Ends(Thatch)	4400/8
Recommended Infill	N/A
Pile Height	3/4"
Pile Weight	40 oz.



Standard Line and Field Colors*



APPLICATION

This non-rubber infilled turf has all the advantages of previous generations and perform even higher in wear and resistance tests. The blend of nylon and polyethylene is an almost perfect 50/50 combination. This gives you the true ball roll of a traditional nylon field, with the softness of the new generation rubber-filled turf. No rubber infill makes maintenance easier, and up to 10% cooler. These systems can also be portable with added 4" or 8" velcro.



*Custom colors available upon request



TESTING

FAST GRASS

FINISHED FABRIC

ENGLISH SYSTEM

METRIC SYSTEM

ASTM TEST

<i>Nominal Specification</i>	<i>Value</i>	<i>Units</i>	<i>Value</i>	<i>Units</i>	<i>Method</i>
Pile Height (Nominal)	3/4	In.	19.05	mm.	D-5823
Face Weight	40	oz/yd ²	1356	g/m ²	D-5828
Total Fabric Weight (5mm Foam)	125	oz/yd ²	4238	g/m ²	D-5828
Total Fabric Weight (SilverBack™)	67	oz/yd ²	2271	g/m ²	D-5828
Primary backing Weight	7	oz/yd ²	237	g/m ²	D-5828
Secondary Coating Weight (Foam)	78	oz/yd ²	2645	g/m ²	D-5828
Secondary Coating Weight (SilverBack™)	20	oz/yd ²	678	g/m ²	D-5828
Tuft Bind	>8	lbs.	>3.6	Kg.	D-1335
Grab Tear Strength (Average)	>200	lbs.	>91	Kg.	D-2256
Lead Content	<50	ppm	<50	ppm	D-2766
Total Yarn Linear Density	9,400	Denier	10,445	D-Tex	D-1577
Tensile Strength	8.0	lbs.	3.63	Kg.	D-5034
Stitch Rate	13.5	Per 3"	17.68	Per 10 cm	D-5793
Machine Gauge	1/4	In.	0.95	Cm.	D-5793
Flammability	TEST	PASSED	TEST	PASSED	D-2859
Water Permeability w/infill	>30	In./Hr.	>76	Cm./Hr.	F-1551
Fiber Thickness	9.4	mils	100	microns	D-3218
Fabric Width	12 & 15	Ft.	3.6 & 4.6	M	None

